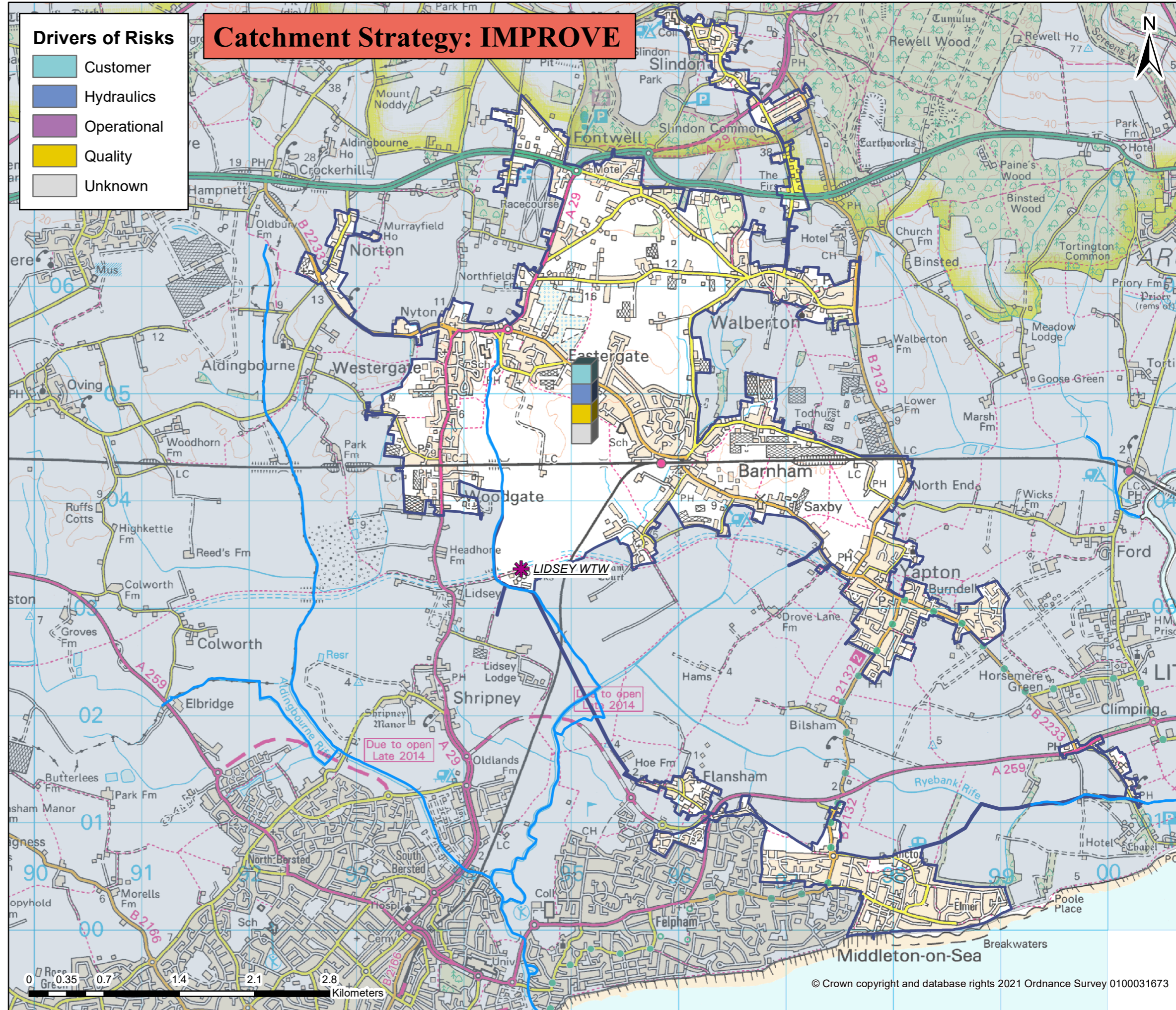
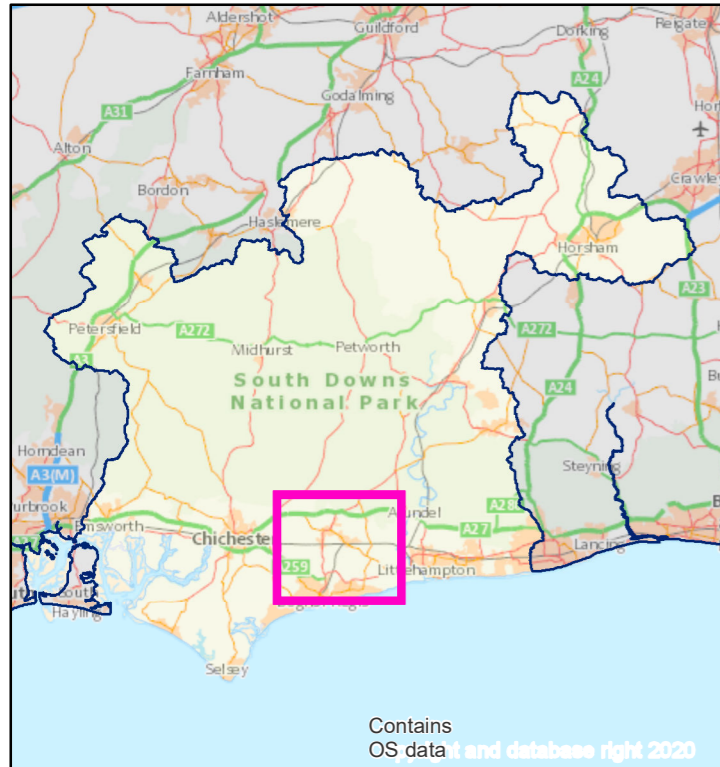


# Lidsey wastewater system: map and key facts



<b>Population Equivalent (PE)</b>	<b>21,708</b>
<b>Discharge Waterbody</b>	<b>Lidsey Rife</b>
<b>Number of Pumping Stations</b>	<b>25</b>
<b>Number of Overflows</b>	<b>5</b>
<b>Length of Sewer (km)</b>	<b>199.7</b>
<b>Catchment Reference</b>	<b>LIDS</b>

BRAVA Results Table		
Planning Objective	2020	2050
1 Internal Sewer Flooding Risk	0	
2 Pollution Risk	2	
3 Sewer Collapse Risk	0	
4 Risk of Sewer Flooding in a 1 in 50 year storm	1	1
5 Storm Overflow performance	2	2
6 Risk of WTW Compliance Failure	0	0
7 Risk of flooding due to Hydraulic Overload	1	2
8 Dry Weather Flow Compliance	1	2
9 Good Ecological Status / Potential	1	
10 Surface Water Management	0	
11 Nutrient Neutrality	2	2
12 Groundwater Pollution	0	
13 Bathing Waters	2	
14 Shellfish Waters	NA	