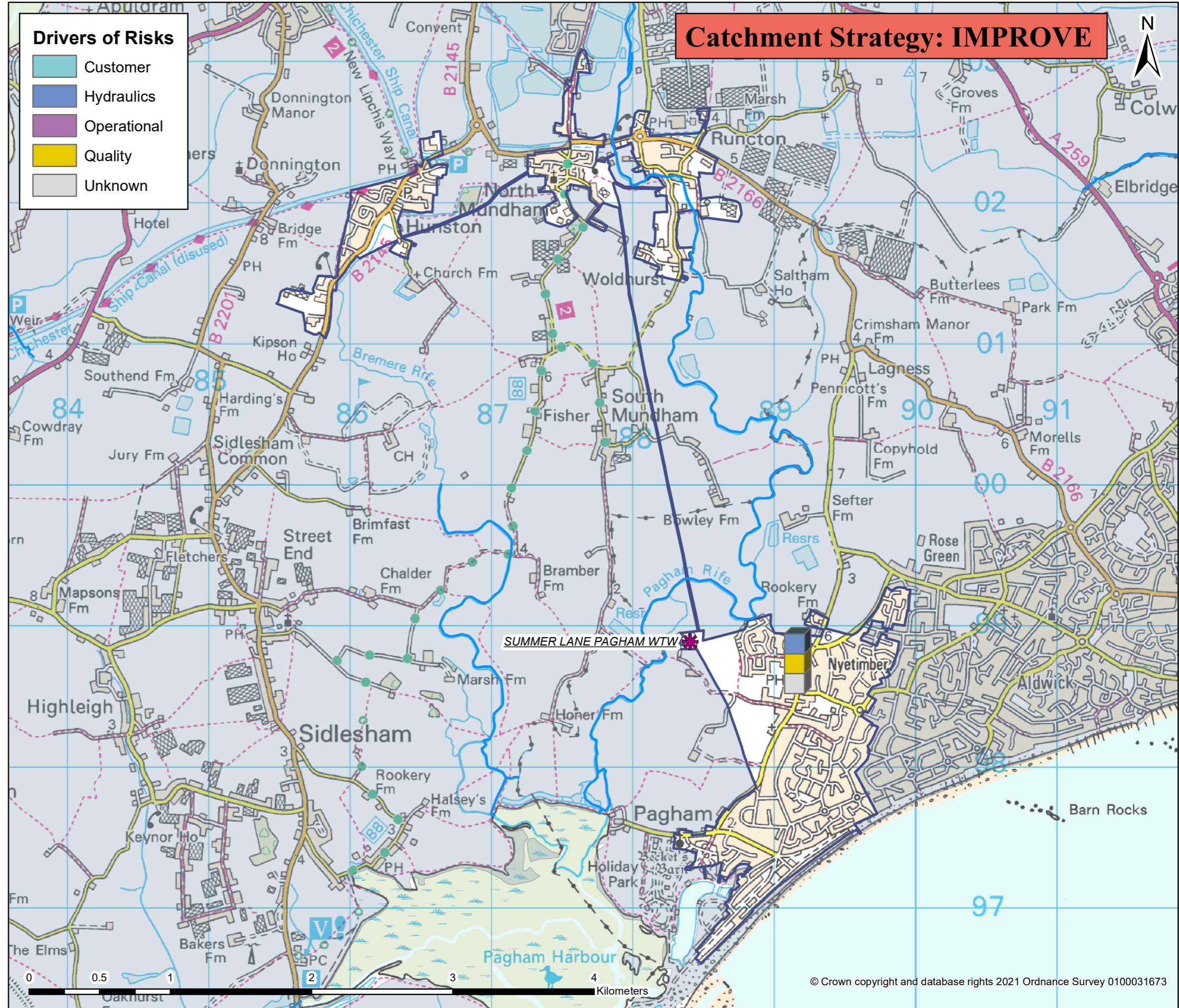
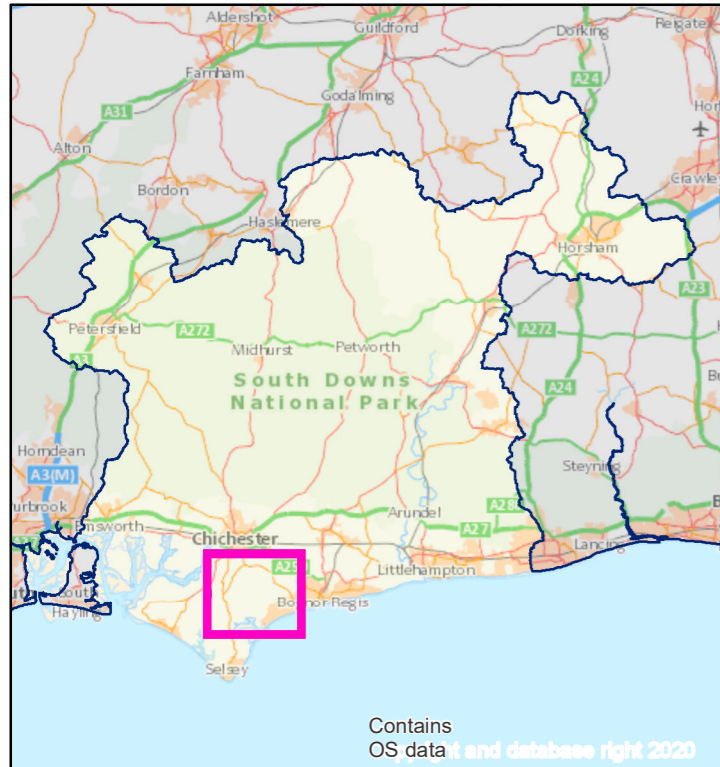


# Pagham wastewater system: map and key facts



**Drivers of Risks**

- Customer
- Hydraulics
- Operational
- Quality
- Unknown

**Catchment Strategy: IMPROVE**

Population Equivalent (PE)	9,664
Discharge Waterbody	Pagham Rife
Number of Pumping Stations	16
Number of Overflows	3
Length of Sewer (km)	112.0
Catchment Reference	PAGM

BRAVA Results Table (PAGM)		
Planning Objective	2020	2050
1 Internal Sewer Flooding Risk	0	
2 Pollution Risk	0	
3 Sewer Collapse Risk	0	
4 Risk of Sewer Flooding in a 1 in 50 year storm	0	0
5 Storm Overflow performance	1	1
6 Risk of WTW Compliance Failure	0	0
7 Risk of flooding due to Hydraulic Overload	0	0
8 Dry Weather Flow Compliance	1	1
9 Good Ecological Status / Potential	0	
10 Surface Water Management	0	
11 Nutrient Neutrality	2	2
12 Groundwater Pollution	0	
13 Bathing Waters	0	
14 Shellfish Waters	NA	