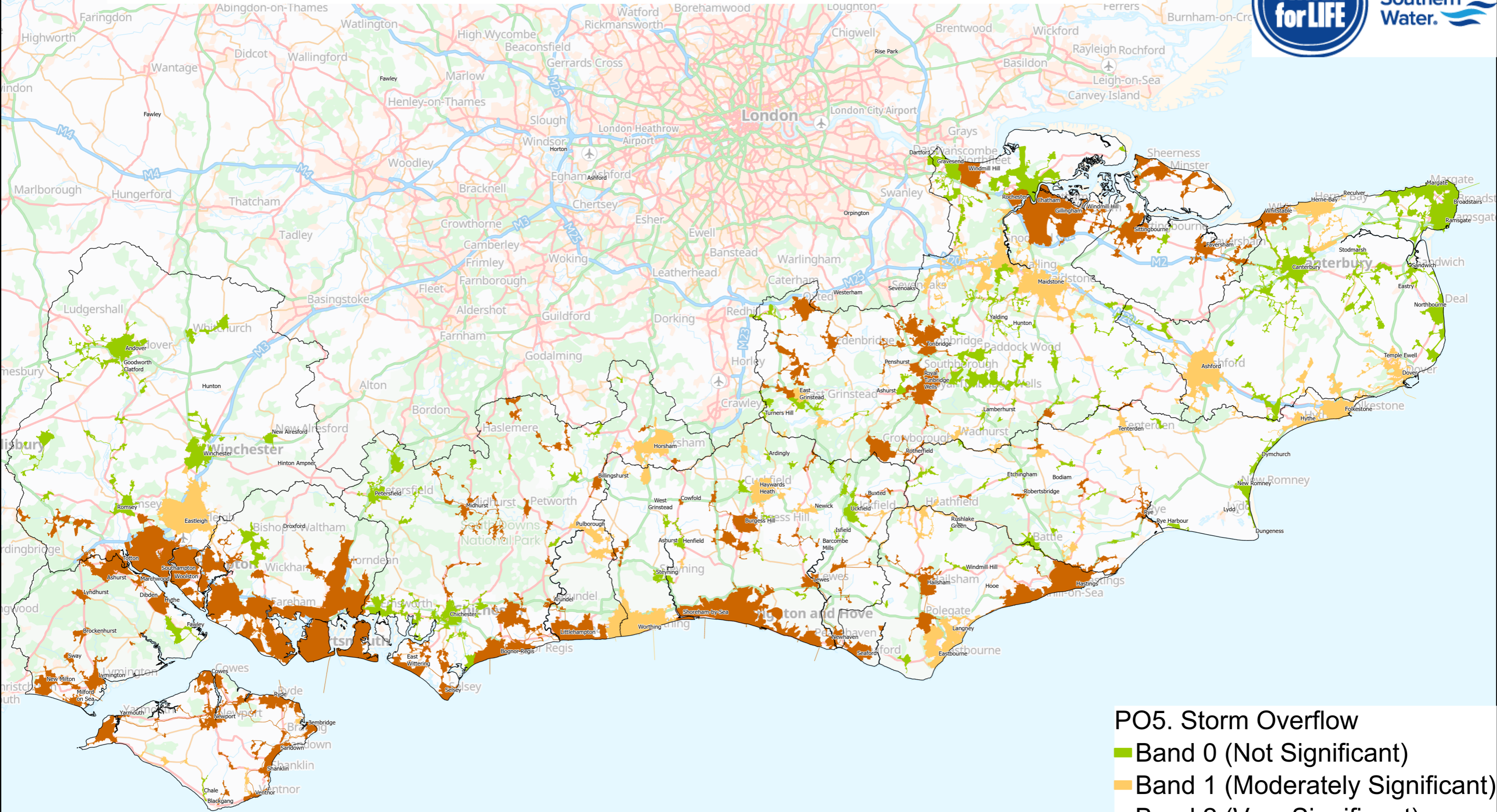
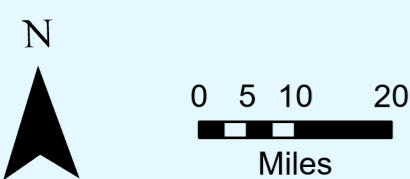


# BRAVA Results for the Planning Objective on Storm Overflow (2020)



- PO5. Storm Overflow**
- Band 0 (Not Significant)
- Band 1 (Moderately Significant)
- Band 2 (Very Significant)
- ▭ River Basin Catchment



Based upon the Ordnance Survey by permission of Ordnance Survey on behalf of the Controller of Her Majesty's Stationary Office. Crown copyright Southern Water Services Limited 1000019426